



Specifications

TVS-200	
Measurement Range	-20°C to 300°C: Standard ~900°C: Option with High Temp Filter
Measurement Accuracy	±2°C below 100°C, ±2% over 100°C
Temperature Resolution	Better than 0.08°C with Averaging
Frame Time	1/60 Sec.
Detector	Uncooled FPA, 320(H) x 240(V) VOx microbolometer
Wavelength	8 to 14 μm
FOV	30.1°(H)x 22.6°(V)(with 22mm standard lens)
Spatial Resolution	1.68mrad
Focus Distance	30cm to ∞
Effective Pixels	320(H) x 240(V)
Display	3.5" Transflective Color LCD Monitor Color View Finder (Option)
Functions	Point Temperature Read Out Digital Zoom Freeze Isotherm Mode Color Selection Background Color Selection Cursor Speed Selection Alarm Color Palette Image Improvement Other Functions
Area icon display	AOI size Large / Small
Scroll display	Date, Time, Emissivity, Ambient Temperature, File Name, Memo, Averaging (Off, 2, 4, 8, 16), Battery Status, Temperature Table Display, Alarm Threshold Temperature
Function Icon Display	CAL Icon: Wink Compensation ZOM Icon: Zoom PLY Icon: Thermal Image Play Back REC Icon: Thermal Image Record FRZ Icon: Freeze On/Off INT Icon: Interval Recording of Thermal Image ALM Icon: Alarm Function On/Off ISO Icon: Isotherm Display AVE Icon: Averaging Selection (off, 2, 4, 8, 16)
Ambient Temp Correction	Auto/Manual
Wink Compensation Selection	Auto/Interval/Manual/off
Auto Temperature Tracking	Auto Sense / Auto Point
Manual Range Setting	Low Temp / High temp / Level / Span / Full Range History Mode (Up to last 5 Temp Setting)
CF Card	Data Storage: 150 Frames/32MB, up to 512MB Mode: CF Format / Delete / Make Directory / File Name Input / One Shot Rec / Interval Rec / One Shot Play Back / Gallery Display / File Name Display File Format: IRI / BMP / LOG
Temperature Unit	°C / °F / K
Video Output	NTSC or PAL
PC Interface	IEEE-1394 (Option)
Power	Battery (Li-ion), AC Adaptor
Power Consumption	13W
Battery Duration	1.5H or more
Operation Temperature	-10°C to 50°C
Dimensions	87(H)x112(W)x218(D)mm/3.4(H)x4.4(W)x8.6(D)in.
Weight	1.6kg/3.5lb (with battery and lens)
Environmental Protection	IP54

Options

Wide Angle Lens 2X

Temperature Measurement Range: -20°C to 300°C
Viewing Distance: 15cm or longer
FOV: 56.7°(H)x 44.0°(V)



Visible Camera

Both thermal image and visible image can be recorded simultaneously.



※When Visible Camera attached

Telephoto Lens 2X

Temperature Measurement Range: -20°C to 300°C
Viewing Distance: 1.2m or longer
FOV: 13.5°(H)x 11.5°(V)



Real Time Data Transfer Kit

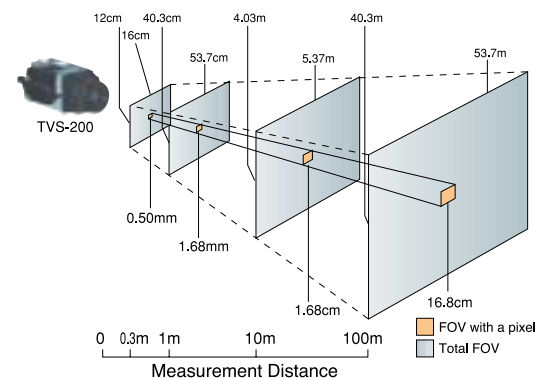
OS: Win2000, winXP(SP2 or better)

Extended Temperature
(Measurement Range 200~900°C)

Color Viewfinder

Carrying case

Measurement Distance and FOV (with standard 22mm lens)



Standard Configuration

- TVS-200(w/22mm standard lens) 1 ea
- Shoulder Strap 1 ea
- Battery Pack 1 ea
- AC Adaptor 1 ea
- Battery Charger 1 ea
- CF Card (32Mb) 1 ea
- Card Adaptor 1 ea
- Operation Manual 1 ea

- Specifications and outline in this brochure are subject to change without notice for improvement.
- Since the product contains an item under export control, delivery is subject to necessary export licenses by the authorities. It is strictly regulated to export the product to certain areas.
- In case of retransfer, resale and/or reexport of the product, prior authorization by the authorities is required.

Caution Please make sure to read the instruction manual carefully before use so that the equipment can be used safely. Do not leave the equipment in a place where there is water, moisture, steam, smoke, etc. It may cause fire, electric shock or failure of the equipment.

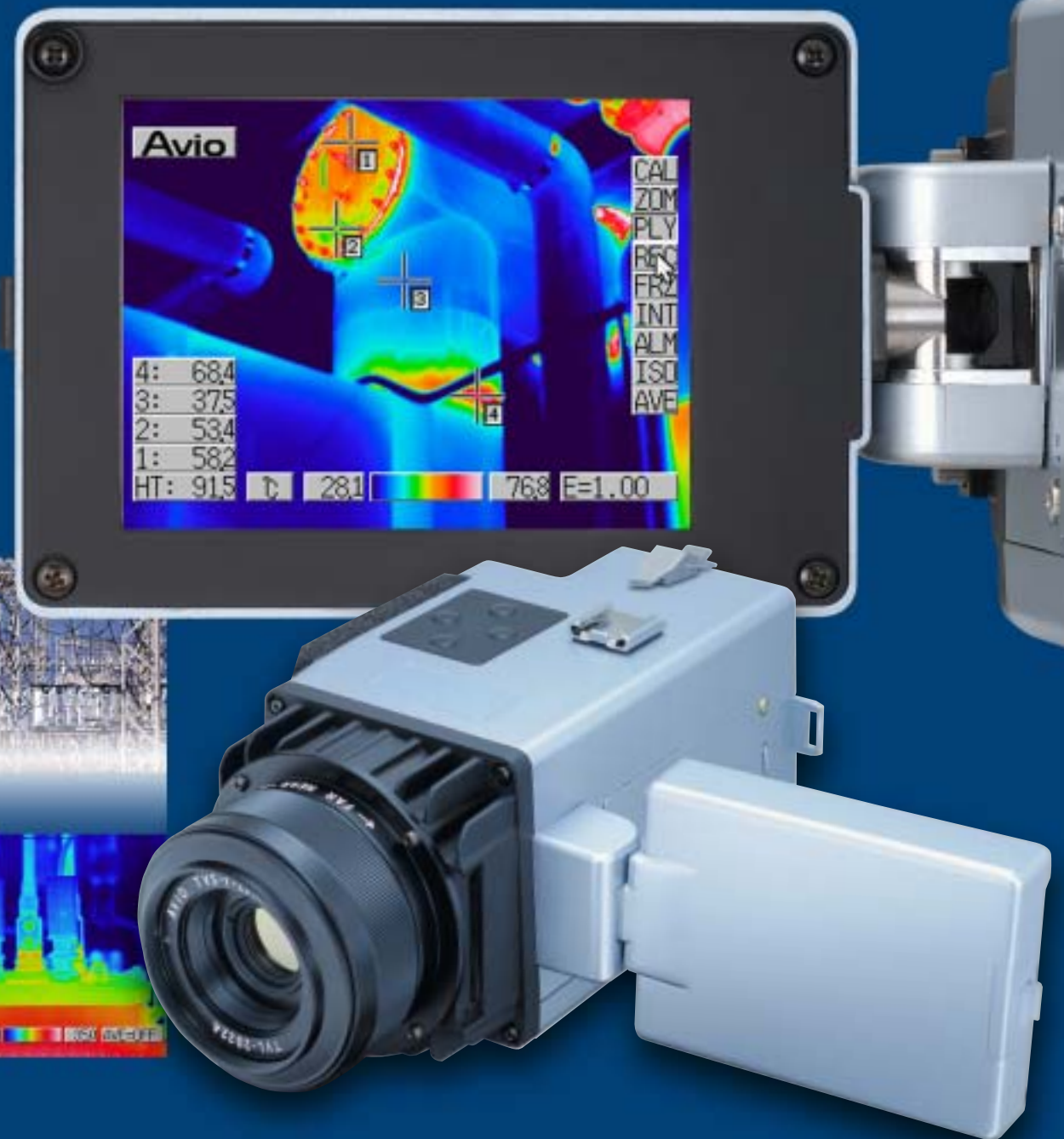
NIPPON AVIONICS CO., LTD.

Overseas Department,
Industrial Electronic Products Sales Division

URL: <http://www.avio.co.jp/>
20-1, Nishi-shinbashi 3-chome
Minato-ku, Tokyo 105-0003, Japan
Phone: 81-3-5401-7386, Fax: 81-3-5401-7344

Handy Thermo TVS-200

*Light and compact portability assists comfortable field use.
Low cost package without compromise in performance.
Simplified operation brings easy and quick control.*



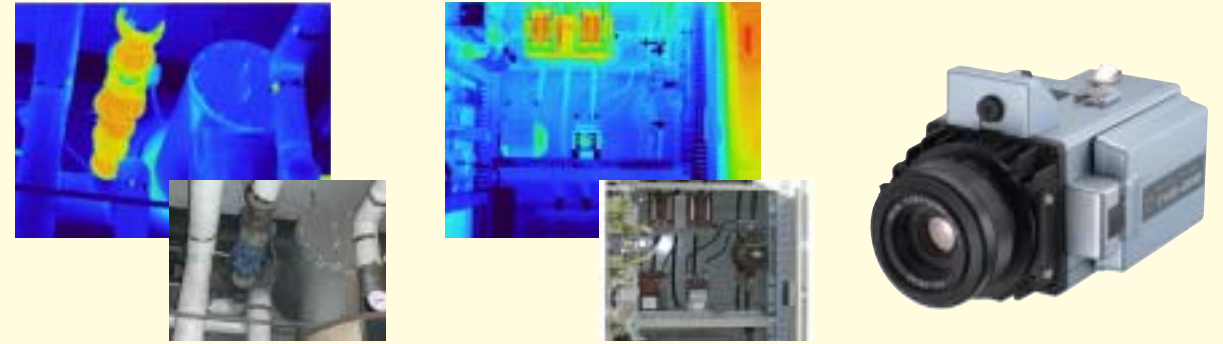
Handy Thermo TVS-200

THERMAL VIDEO SYSTEM

Handy Thermo TVS-200 is a thermography equipment realizing small size and light weight by using the made-in-Japan uncooled IR FPA detector. In addition to its high accuracy and supreme image quality, superior portability and high functionality are combined together. You will be satisfied with the TVS-200 performance not only in the field applications such as the plant maintenance and building diagnosis but also in any kind of applications where thermal images are essential.



Visible Camera Unit (Option)



Both thermal image and visible image can be recorded simultaneously.

Ultra-Light Weight 1.6kg

Supreme Image Quality, High Temperature Resolution Made-in-Japan Uncooled IR FPA

(Better than 0.08°C with Averaging)

1 **LOGO icon**
The menu is displayed.

2 **POINT icon**
The temperature value at each cursor point is displayed.

3 **POINT CURSOR**
The measuring points from P1 to P5 are displayed.

4 **AREA icon**
Maximum and minimum temperatures within an area are displayed.

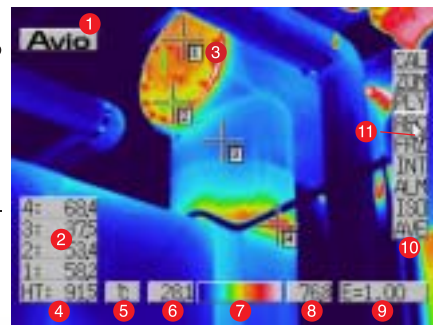
5 **UNIT icon**
The temperature unit is displayed.

6 **LTEMP icon**
The designated lower limit temperature of a thermal image is displayed.

7 **COLOR bar**
The selected color palette (pseudo color) is displayed.

1 Plain and Simple Menu Display

A desired function can be activated by clicking on the icon on the screen.



Display menu.

8 **HTEMP icon**
The designated upper limit temperature of a thermal image is displayed.

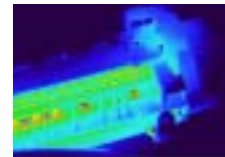
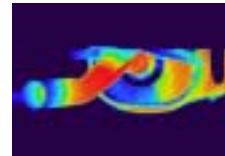
9 **SCROLL icon**
It switches the display among date, time, emissivity, camera ambient temperature, file name, memo, averaging, battery status and temperature table information.

10 **FUNCTION icon**
The function execute button is displayed. The display appears when the cursor is moved to the desired button position.

11 **MOUSE CURSOR**
It can be moved freely over the entire screen to select the icon desired to be activated.

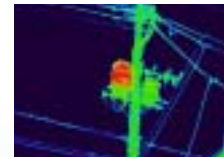
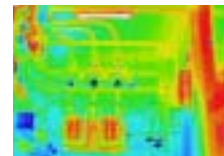
R&D

Thermal design of electronic equipment and test of automobile parts, etc.



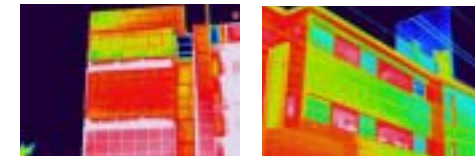
Power Facilities

Inspection of substations and power transmission lines, etc.



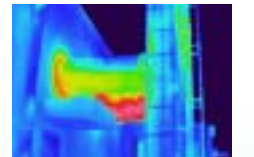
Building Inspection

Inspection for delamination of concrete or tiles or for water leakage, and evaluation of thermal insulation.

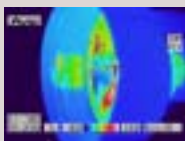
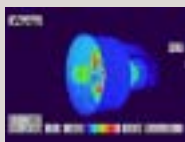


Plant maintenance

Inspection and maintenance of piping and facilities.



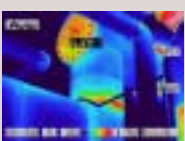
ZOOM function



ISOTHERM display



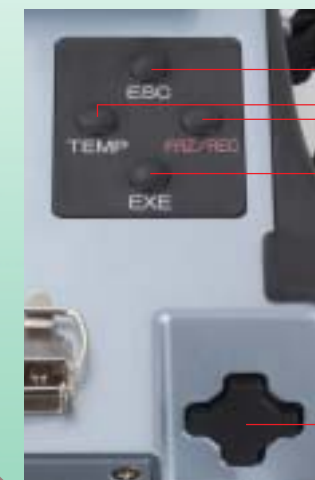
ALARM display



An alarm will be displayed on the screen when a temperature exceeding the preset range is measured.



2 User Friendly Operation



ESC key
It is used for execution of CANCEL operation and others.

TEMP key
It is used for temperature range setting.

FRZ/REC key
It is used for freeze function ON/OFF and for thermal image recording.

EXE key
It is used for selection and execution of a function.

SCROLL key
It is used to move the cursor.